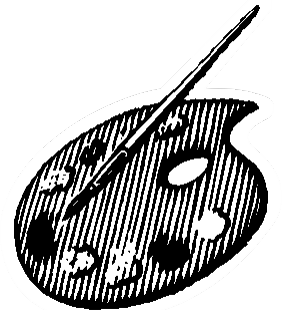
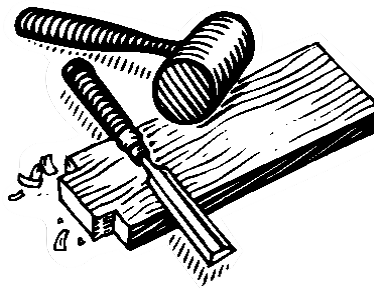
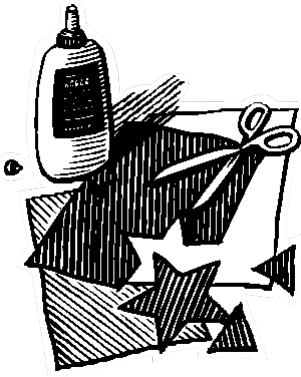


Jackson County Junior Fair

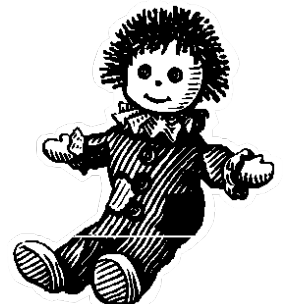
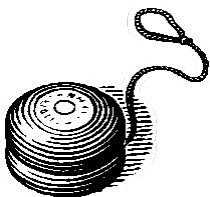
Home Arts Department V



2016



Official Rules



DEPARTMENT V - HOME ARTS

Gina Taylor - 372-8199 Cindy Hanshaw - 372-9958
Terri Hackney - 541-9075 Loudonna Watkins – 273-4000
Ashley Davis – 372-2834 Darlene Davis – 372-2834

GENERAL RULES – *Please read carefully*

1. All exhibits must have been completed during the past 12 months. **Exhibits for 2016 must have been created between Monday July 20, 2015 and Sunday July 24, 2016.** Any exceptions must meet with approval of the Home Arts Committee. Exhibits must be registered at the Fairground between 2:00 and 6:30 p.m. on Sunday July 24, 2016.
2. Prize money will be paid in no more than five (5) classes in Home Arts. Judges may award a Best of Fair ribbon to a blue ribbon exhibit in any class. A Grand Champion rosette may be given in any section. Two dollars additional premium money will be paid for each Best of Fair ribbon, if funds are available. No additional premium will be awarded with the Grand Champion rosette. **Early removal of exhibits must be handled through the fair office and prize money will be forfeited.** All final decisions with regard to Classification and Merit of exhibits are the responsibility of the judge.
3. Items or kits that belong in pairs **MUST BE** together in small container or secured together in some manner.
4. Exhibit(s) must be the exhibitor's own work and cannot be entered in someone else's name. Exhibits will be accepted from members of Jackson County FCCLA, FFA, 4-H clubs, Jackson County CEOS Clubs and Jackson County residents. **Individuals may register exhibits for a maximum of three (3) other exhibitors. Exhibitors are permitted to enter no more than one exhibit per class.**
5. All painting, tole, decoupage, etc. **MUST BE DRY.** Exhibits with wet or tacky paint will not be accepted.
6. Food exhibits must be complete as listed to be eligible for ribbon, premium, and display (see specific rules related to foods). Food exhibits should be on a paper plate and protected by a plastic food storage bag. **WE DO NOT ACCEPT FOOD ENTRIES THAT REQUIRE REFRIGERATION.**
7. Quilts that do not have a 4" sleeve at the top for hanging will be pinned to dowel rod for showing.
8. **PLEASE DO NOT attempt to categorize your exhibits.** This will be done for you during registration.
9. Refer to general rules and regulations of 2016 Fair for the directions for entering exhibits.

YOUTH

1. Any Jackson County youth 18 and under may enter his/her own work in any of the classes of this department. Youth entries that are awarded blue, red, white ribbons may also receive premium money **if funds are available**. Youth entries will be designated by the class number followed by the letter "Y" and the age of the exhibitor.

Awards: Blue - \$7.00; Red - \$5.00; White - \$4.00; Best of Fair - \$2.00
THE HOME ARTS DIVISION WILL NOT ACCEPT DO NOT JUDGE ITEMS!

ADULTS

All classes are open to Jackson County adult exhibitors and Jackson County CEOS members. Adult entries will be awarded blue, red, white, Best of Fair ribbons, and premium money if funds are available.



BALL® Fresh Preserving™ AWARD
FOR ADULT LEVEL presented by:
BALL® & KERR® Fresh Preserving™ PRODUCTS

ADULT FOOD PRESERVATION AWARDS

1. Jarden Home Brands, marketers of Ball® and Kerr® Fresh Preserving Products is proud to recognize today's fresh preserving (canning) enthusiasts. 1st and 2nd Place Awards will be given to individuals whose home canned entry is selected the best in the category.
2. Judges will select the two best entries for Fruit, Vegetable, Pickle, and Soft Spread categories. Entries must be preserved in Ball® Classic, Collection Elite®, or Heritage Collection Jars sealed with Ball® Classic, Collection Elite®, or Heritage Lids and Bands, or preserved in Kerr® Jars sealed with Kerr® Lids and Bands. In addition, soft spread entries must be prepared using Ball® Pectin: Classic, Low or No-Sugar, or Liquid.
3. **All preserved foods must be processed according to current USDA guidelines. For current guidelines, refer to the National Center for Home Food Preservation website (<http://www.uga.edu/nchfp/>), or contact the Extension Office (372-8199).**

Entries from each category honored with the First Place award will receive:

- Two (2) Five-Dollar (\$5) Coupons for Ball® or Kerr® Fresh Preserving Products and one (1) Free (up to \$5 value) Coupon for Ball® Pectin.

Entries from each category honored with the Second Place award will receive:

- One (1) Five-Dollar (\$5) Coupon for Ball® or Kerr® Fresh Preserving Products and one (1) Free (up to \$5 value) Coupon for Ball® Pectin.



BALL® Fresh Preserving™ AWARD
FOR YOUTH LEVEL presented by:
BALL® & KERR® Fresh Preserving™ PRODUCTS

YOUTH FOOD PRESERVATION AWARDS

1. Jarden Home Brands, marketers of Ball® and Kerr® Fresh Preserving Products, is proud to recognize today's fresh preserving (canning) enthusiasts. An award for 1st place will be presented to the individual whose home canned entry is selected the best in the category.
4. Judges will select the two best entries for Fruit, Vegetable, Pickle, and Soft Spread categories. Entries must be preserved in Ball® Classic, Collection Elite®, or Heritage Collection Jars sealed with Ball® Classic, Collection Elite®, or Heritage Lids and Bands, or preserved in Kerr® Jars sealed with Kerr® Lids and Bands. In addition, soft spread entries must be prepared using Ball® Pectin: Classic, Low or No-Sugar, or Liquid.
3. **All preserved foods must be processed according to current USDA guidelines. For current guidelines, refer to the National Center for Home Food Preservation website (<http://www.uga.edu/nchfp/>), or contact the Extension Office (372-8199).**

Entries from each category honored with a First Place award will receive:

- One (1) Five-Dollar (\$5) Coupon for Ball® or Kerr® Fresh Preserving Products and one (1) Free (up to \$5 value) Coupon for Ball® Pectin.



2016 WILTON FAIR AWARDS

Wilton Enterprises will award one "Best of Class" for each age category, Adult and Junior. "Best of Class" winners from the Decorated Cake Divisions and Cupcake Divisions will receive the following prizes:

- Wilton Easy Layers! 6 in. Cake Pan Set, 5 Pc. (decorated cakes)
- Wilton 12-Pc. Cupcake Decorating Set (decorated cupcakes)

"First Place Winners" winners from the Decorated Cake Divisions and Cupcake Divisions will receive the following prize:

- Wilton 12-Pc. Cupcake Decorating Set

SECTION A - FOODS

1. **Each exhibit must consist of one Mason-type jar of appropriate size as listed in classes 200-206** (no mayonnaise, salad dressing, or other types of commercially canned jars will be permitted) sealed with a two-piece vacuum cap/flat lid & ring combination in good condition (rust free and unbent).

Mason jars are a type of jar (not a brand) invented in 1858. These jars are made of soda-lime glass and are designed to withstand the heat of both boiling water bath and pressure canning. Mason-type jars are manufactured by many trusted companies such as Ball, Kerr, etc.

2. Only products preserved Monday **July 20, 2015 or later** are eligible for entry.
3. Each exhibit must be labeled with a tag containing name of product, date prepared and method of processing (ex. hot water bath, pressure canner, etc.). **We DO NOT accept canned foods that have not been processed either by hot water bath or pressure canner.**
4. **ALL** preserved foods must be processed according to current USDA guidelines. **This rule also applies to jellies, jams, and other soft spreads.** For current guidelines, refer to the National Center for Home Food Preservation website (<http://www.uga.edu/nchfp/>), or contact the Extension Office (372-8199).

FOOD PRESERVATION:

CANNED GOODS - All canned goods must be canned in Mason-type jars

- Class 200 - One *half-pint or pint* jar of jellies, jams, or preserves
- Class 201 - One *half-pint, pint or quart* jar of pickles, relishes, or other pickled items
- Class 202 - One *pint or quart* jar of fruit
- Class 203 – One *quart* jar of fruit or vegetable juice (not eligible for Ball® Awards)
- Class 204 - One *pint or quart* jar of vegetables
- Class 204A – One *pint or quart* jar of tomatoes (not including salsa or spaghetti sauce)
- Class 205 – One *pint* jar of salsa (not eligible for Ball® Awards)
- Class 206 – One *quart* jar of spaghetti sauce (with or without meat)
- Class 207 – One *quart* jar of meat, poultry, or seafood (not eligible for Ball® Awards)
- Class 208 - Miscellaneous (one item that does not fit in classes 200-207)

BAKED GOODS - Foods must be displayed on disposable plate, protected by a food storage bag. Title of recipe is to be included on label.

QUICK BREADS

- Class 209 - Exhibit of three biscuits
- Class 210 - Exhibit of three muffins
- Class 211 - Exhibit of ½ loaf of quick bread such as banana, nut, etc.

YEAST BREAD

- Class 212 - One-half loaf of yeast bread
- Class 213 - Three dinner rolls
- Class 214 - One half loaf holiday/coffee bread
- Class 215 - Three sweet rolls
- Class 216 - Miscellaneous

CAKES & CUPCAKES

- Class 217 - One fourth of cake
- Class 218 - Two cupcakes (iced or plain - not decorated)
- Class 219 - Decorated Cake (Cake dummy may be used) Adult
- Class 220 - Decorated Cake (Cake dummy may be used) Youth
- Class 221 - Decorated Cupcake – Adult (Limit 2 cupcakes)
- Class 222 - Decorated Cupcake – Youth (Limit 2 cupcakes)

COOKIES - Three cookies (baked: bar, shaped, dropped, rolled, pressed, molded, etc.)

- Class 223 – Bar (cut after baking)
- Class 224 – Dropped
- Class 225 – Rolled (cut-outs)
- Class 226 – Pressed (cookie gun or cookie press)
- Class 227 – Molded (shaped with fingers)
- Class 228 - Decorated Cookies
- Class 229 - No Bake Cookies
- Class 230 - Miscellaneous

CANDY

Class 231 - Three pieces of one or more kinds of homemade candy

Class 232 – Decorated candy (including marzipan)

Class 233 - Molded Candy, 3 pieces

Class 234 - Miscellaneous

SECTION B – CLOTHING

CONSTRUCTED CLOTHING

Class 235 - Single clothing item

Class 236 - Accessories (hats, purses, etc.)

Class 237 - Miscellaneous constructed clothing

DECORATIVE CLOTHING

Class 238 - Single clothing item

Class 239 - Accessories (hats, shoes, purses, etc.)

Class 240 - Miscellaneous decorative clothing



SECTION C - QUILTING

FULL SIZE QUILTS – 72” or larger on each side PATCHWORK

Class 241 - Hand pieced/hand quilted

Class 242 - Hand pieced/machine quilted

Class 243 - Machine pieced/hand quilted

Class 244 - Machine pieced/machine quilted

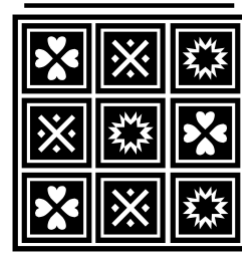
APPLIQUE

Class 245 - Hand appliqué/hand quilted

Class 246 - Hand appliqué /machine quilted

Class 247 - Machine appliqué /hand quilted

Class 248 - Machine appliqué /machine quilted



EMBROIDERED

Class 249 – Hand embroidered/hand quilted

Class 250 - Hand embroidered/machine quilted

OTHER TECHNIQUES

Class 251 – Knotted

Class 252 – Miscellaneous

BABY QUILTS

Class 253 – Hand pieced/hand quilted

Class 254 – Hand pieced/machine quilted

Class 255 – Machine pieced/hand quilted

Class 256 – Machine pieced/machine quilted

Class 257 – Hand appliqué/hand quilted



- Class 258 – Hand appliqué/machine quilted
- Class 259 – Machine appliqué/hand quilted
- Class 260 – Machine appliqué/machine quilted
- Class 261 - Hand embroidered/hand quilted
- Class 262 - Hand embroidered/machine quilt
- Class 263 - Machine embroidered/hand quilted
- Class 264 - Machine embroidered/machine quilted
- Class 265 - Knotted
- Class 266 - Miscellaneous (rag quilts, kits, pre-printed, original design, etc.)

PILLOWS

- Class 267 – Hand pieced, hand quilted
- Class 268 - Hand pieced, machine quilted
- Class 269 - Machine pieced, hand quilted
- Class 270 - Machine pieced, machine quilted
- Class 271 – Miscellaneous (rag, kits, pre-printed, original design, etc.)

WALL HANGINGS

- Class 272 – Hand pieced, hand quilted
- Class 273 - Hand pieced, machine quilted
- Class 274 - Machine pieced, hand quilted
- Class 275 - Machine pieced, machine quilted
- Class 276 – Miscellaneous (kits, pre-printed, original design, etc.)

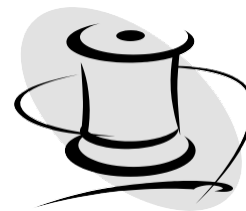
MINIATURE QUILT - max 72” perimeter

- Class 277 – Any technique

SECTION D - NEEDLE CRAFTS

NEEDLEPOINT

- Class 278 - Household articles
- Class 279 - Accessories, purse, etc.
- Class 280 - Pictures
- Class 281 - Plastic Canvas (limit 1 large or 4 small)
- Class 282 - Miscellaneous needle crafts



EMBROIDERED CRAFTS

- Class 283 - Household articles
- Class 284 - Garments or accessories
- Class 285 - Special Occasion articles - Easter, Christmas, etc.
- Class 286 - Embroidered Pillows
- Class 287 - Miscellaneous - other embroidered items not listed above

CROCHETED CRAFTS

- Class 288 - Household articles
- Class 289 - Adult garment/accessories
- Class 290 - Child, baby garment/accessories

- Class 291 - Afghan, full size
- Class 292 - Baby Afghan (less than 40" X 40")
- Class 293 - Toys
- Class 294 - Special occasion articles - Easter, Christmas, etc.
- Class 295 - Miscellaneous - other crocheted items not listed above

KNITTED CRAFTS

- Class 296 - Household articles
- Class 297 - Adult garment/accessories
- Class 298 - Child, baby garment/accessories
- Class 299 - Afghan, full size
- Class 300 - Baby Afghan (less than 40" X 40")
- Class 301 - Toys
- Class 302 - Special occasion articles - Easter, Christmas, etc.
- Class 303 - Machine knitted (Item must have been knitted on a home knitting machine--no item constructed from commercially knitted fabric will be accepted)
- Class 304 - Miscellaneous - other knitted items not listed above



COUNTED CROSS-STITCH

- Class 305 - Household articles
- Class 306 - Garments or accessories
- Class 307 - Pictures
- Class 308 - Special occasion (Easter, Christmas, etc.)
- Class 309 - Miscellaneous - other Counted Cross Stitch items not listed above

FABRIC CRAFTS

- Class 310 - Toys
- Class 311 – Panel Pillows (not quilted or needlework)
- Class 312 - Household items
- Class 313 - Fleece (Blankets, toys, etc.)
- Class 314 - Special occasion articles
- Class 315 - Miscellaneous (including fabric wreath)

RUGS

- Class 316 – Braided
- Class 317 – Woven
- Class 318 – Hooked
- Class 319 – Crocheted or knitted
- Class 320 - Miscellaneous rugs

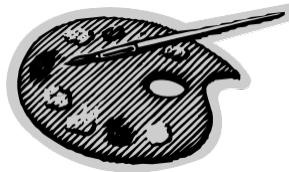


SECTION E - ART WORK

Note: Due to limited display space, 2016 entries are limited to a maximum size of 16" x 20".

PAINTINGS AND ART WORK (only one item per exhibit) All paintings, sketches and artwork must be framed or mounted suitable for hanging (with hanger attached). Art work to be entered in name of signed artist.

- Class 321 - Oils
- Class 322 - Watercolors
- Class 323 - Pastels
- Class 324 - Charcoal
- Class 325 - Pencil
- Class 326 - Ink
- Class 327 - Acrylic
- Class 328 – Miscellaneous



STAINED GLASS

- Class 329 – Flat (mirrors, sun catchers, windows, etc.)
- Class 330 – 3-Dimensional (figurines, lamps, bowls, boxes, etc.)
- Class 331 – Miscellaneous



TOLE PAINTING

Oils:

- Class 332 - Wooden
- Class 333 - Metal
- Class 334 - Miscellaneous

Acrylics:

- Class 335 - Wooden
- Class 336 - Metal
- Class 337 - Miscellaneous

CERAMICS

- Class 338 - General ceramic piece
- Class 339 - Seasonal/Holiday pieces
- Class 340 – Miscellaneous

SPECIAL CONTEST – 2016 ONLY

Category – 328A
Painting (Oils or Watercolors)

Find an already-painted landscape at a thrift store, yard sale, etc. and paint your own monster into it using oil paint or acrylic paint!

JEWELRY

- Class 341 – Necklace
- Class 342 – Bracelet
- Class 343 – Earrings
- Class 344 – Pin
- Class 345 – Miscellaneous

SECTION F - PHOTOGRAPHY - open to amateur photographers only, one item per class.

All photos must now be size 8" x 10."

All photos must be matted with a black store-bought mat OR homemade mat of heavy black paper (construction paper, etc.)

MAXIMUM of five (5) entries overall in Section F, and only one entry per class.

LANDSCAPES: Overall view of land, mountains, etc. with no dominant man-made features.

Class 346 - Color

Class 347 - Black & White

Class 348 – Manipulated Photography

SUNRISES or SUNSETS: Only photos of sunrises or sunsets

Class 349 – Color

Class 350 – Black & White

Class 351 – Manipulated Photography

PLANTS & FLOWERS

Class 352 – Color

Class 353 – Black & White

Class 354 – Manipulated Photography

WILDLIFE: Pictures of wild, animals, and insects

Class 355 - Color

Class 356 - Black & White

Class 357 – Manipulated Photography

DOMESTICATED ANIMALS

Class 358 - Color

Class 359 - Black & White

Class 360 – Manipulated Photography

PEOPLE: Indoor

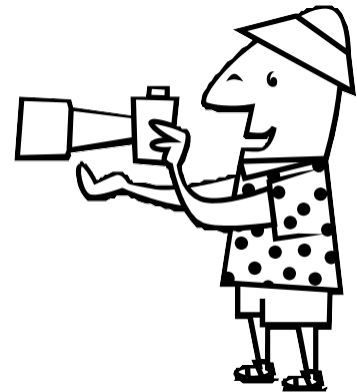
Class 361 - Portrait, Color

Class 362 - Portrait, Black & White

Class 363 – Manipulated Photography

PEOPLE: Outdoors

Class 364 - Color



Class 365 - Black & White
Class 366 – Manipulated Photography

STILL LIFE: Non-nature shot of a product item such as jewelry, pottery, etc.

Class 367 - Color
Class 368 - Black & White
Class 369 – Manipulated Photography

ACTION SHOT

Class 370 - Color
Class 371 - Black & White
Class 372 – Manipulated Photography

ARCHITECTURAL

Class 373 – Color
Class 374 – Black & White
Class 375 – Manipulated Photography

PANORAMA

Class 376 – Color
Class 377 – Black & White
Class 378 – Manipulated Photography

SECTION G - WOOD CRAFTS

Class 379 - Toys
Class 380 - Furniture
Class 381 - Wooden Sculptures and silhouettes
Class 382 - Wooden Boxes (including bird feeders and bird houses)
Class 383 – Wood-turned Pens
Class 384 – Wood-turned Bowls
Class 385 – Wood-turned other
Class 386 – Miscellaneous

SECTION H - HOBBY CRAFTS

Class 387 - Chair or stool with woven seat - rush, cane, etc.
Class 388 - Dolls
Class 389 - Decoupage
Class 390 - Beadwork
Class 391 - Scrapbooking – (Individual pages or a complete book that tells a story)
Class 392 - Pottery
Class 393 - Single media basket
Class 394 - Mixed media basket
Class 395 - Special occasion basket
Class 396 - Miscellaneous basket
Class 397 - Miscellaneous variety crafts

SECTION I - FLOWERS, PLANTS, AND ARRANGEMENTS

FLOWER ARRANGEMENTS:

- Class 398 - Permanent flower arrangement (plastic, silk, etc.)
- Class 399 - Fresh flower arrangement
- Class 400 - Dried flower arrangement
- Class 401 - Potpourri (include a list of ingredients)
- Class 402 - Decorative wreath
- Class 403 – Miscellaneous flower arrangements



POTTED PLANTS: Plants should be exhibited in a container no larger than 10" in diameter.

- Class 404 - Flowering plant
- Class 405 - Foliage plant
- Class 406 - Succulents
- Class 407 - Potted herbs
- Class 408 – Miscellaneous

SECTION J – CHILDREN’S CRAFTS

- Class 409 – Plaster of Paris
- Class 410 – Beadwork
- Class 411 – Baskets
- Class 412 – Birdhouses
- Class 413 – Recycled items
- Class 414 – Miscellaneous

Please note: Changes may arise prior to the 2016 Jackson County Junior Fair and will be implemented as the committee deems necessary.

Jackson County Junior Fair Website: <http://www.jcif.net/>

Jackson County Pie Contest Conducted by: Jackson County Community Educational Outreach Service Clubs

Gina Taylor – 304-372-8199

Jackson County Jr. Fairgrounds - Cottageville, West Virginia
Held in Conjunction with the Jackson County Jr. Fair



RULES:

1. The Pie Contest is open to **JACKSON COUNTY RESIDENTS ONLY**
2. Pie fillings must be fresh, home preserved, or home frozen. Commercially canned pie fillings are not acceptable.
3. Crusts must be scratch made (not store-bought or commercially prepared).
4. Pies containing ingredients requiring refrigeration (such as milk, cream cheese, eggs, whipped topping, etc.) will not be accepted due to lack of refrigeration at the contest site. Pies that do not require refrigeration are permitted in the competition. No cream pies. No Jello pies. No Dream pies.
5. Pies should be standard size in a disposable container, protected by a plastic food storage bag (not plastic wrap). Pies fit well into 2-gallon plastic zipper bags.
CONTAINERS WILL NOT BE RETURNED.
6. There will be eight divisions; all pies in a division will be in competition for that division's award (there will be no specific product categories). Divisions are:

Youth (Ages 8 - 17) - Single Crust	Youth (Ages 8 - 17) - Double Crust
Adult (18 -50) - Single Crust	Adult (18 - 50) - Double Crust
Adult (51 & over) - Single Crust	Adult (51 & over) - Double Crust
7. Contestants must submit one copy of their recipe with name, correct mailing address, zip code, and telephone number on the back. Recipes must be typed or printed. Recipes must include recipes for both crust and filling.
8. An individual contestant may enter only two (2) pies per division.
9. All pies entered in this contest will be auctioned to the highest bidder at the Fair; proceeds will be used to support improvements to exhibit halls and JCCEOS projects.
10. **The judge's decisions are final.**

PIE CONTEST SCHEDULE **Saturday, July 30, 2016**

Register Pie Entries – 12:00-1:30 at the Fair Office

Pie Auction in the Show Arena – 4 PM